



TrinityTM Pro

Cameras

Fully integrated, easy to swap and well protected

Table of Contents

Sony RX1 RII	04
Oblique D2M	06
Qube 240	08
MicaSense RedEdge-P	10
MicaSense Altum-PT	12



SONY RX1 RII

RGB Camera

The Sony RX1 RII meets the highest demands for RGB image quality and resolution in everyday surveying and monitoring applications, especially in the mining, civil survey, and agricultural sector.



With its resolution of 42.4 megapixels, the Sony RX1 RII is ideal for all applications where the highest requirements are placed on the images. The output possibilities vary from precise data sets like digital ortho photos

(DOP), digital terrain models (DTM), digital surface models (DSM), high-resolution point clouds and detailed 3D models.

SONY RX1 RII

Technical Specifications



Sensor Resolution	42.4 MP (7952 × 5304 px)
GSD	1.29 cm @100m AGL
Trigger Interval	1.4 seconds
Sensor Type	CMOS
Sensor Format	Full frame
Sensor Size	35.9 mm × 24.0 mm
Lens	f=35 mm, F2.0
Payload Weight RTF	693,7 g
Storage	SD-Card (internal slot)

Sample Data



FLIGHT ALTITUDE
120 m | 393 ft AGL



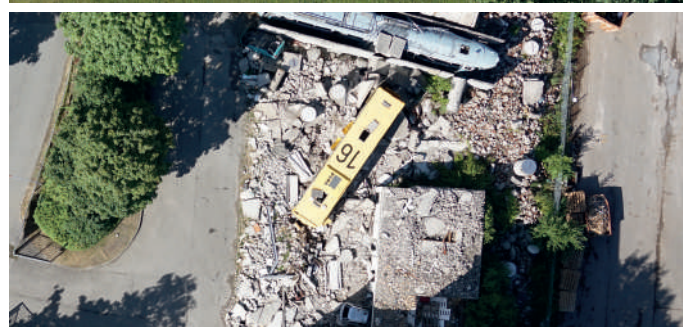
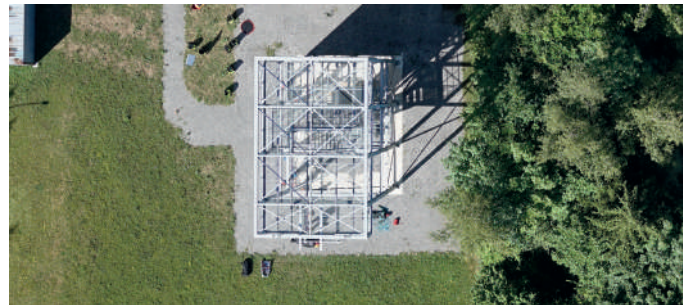
FLIGHT SPEED
17 m/s



GSD
1.55 cm/px



DOWNLOAD
SAMPLE DATA





Oblique D2M

Five-lens RGB Camera

The Oblique D2M is a powerful oblique imaging system consisting of five high-resolution multidirectional cameras, making it the ideal tool for large scale 3D photogrammetry.



A fast trigger interval along with custom high-speed storage provides class-leading time efficiency without compromising data quality. The payload combines four oblique and one NADIR camera to capture complex

geometries with ease. This ensures remarkable detail even on slanted surfaces and makes Oblique D2M destined for 3D mesh generation of high-rise areas, industrial environments, archaeological sites and alike.

Oblique D2M Technical Specifications



GSD	1.50 cm @100m AGL
Cameras	1 x NADIR, 4 x oblique
Sensor Resolution	26 MP (6252 x 4168 px)
Total Resolution	130 MP
Trigger Interval	≥ 0.8 seconds
Sensor Type	CMOS
Sensor Format	APS-C
Sensor Size	23.5 x 15.6 mm
Focal Length	25 mm NADIR, 35 mm (oblique)
Payload Weight RTF	833.7 g
Flight Time	60 minutes
Storage	High speed data storage device (640 GB)

Sample Data



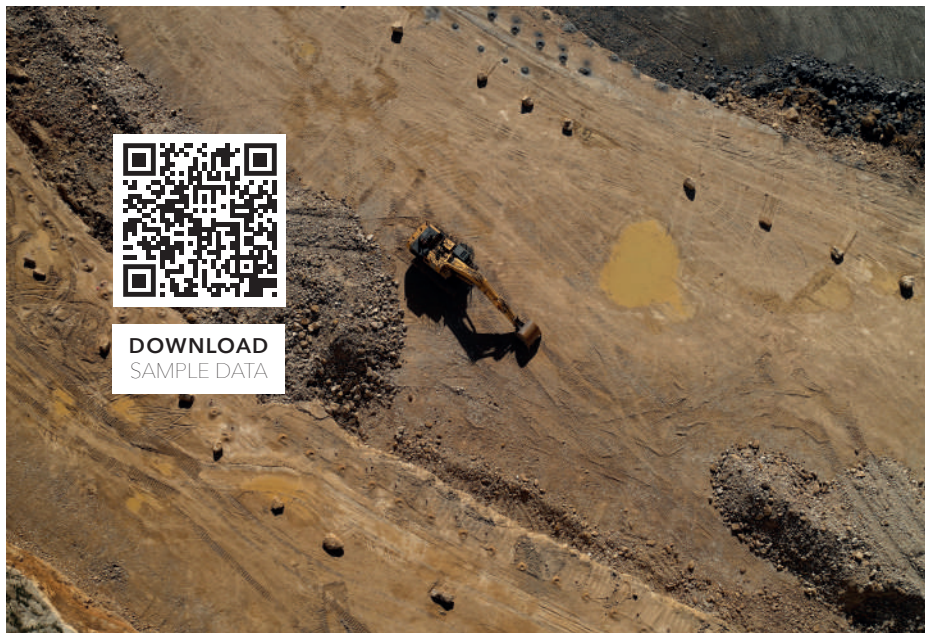
FLIGHT ALTITUDE
120 m | 393 ft AGL



FLIGHT SPEED
17 m/s



GSD
1.8 cm/px





TRINITY PRO

QUBE 240

Qube 240

LiDAR Scanner

The Qube 240 is a geomatics grade LiDAR scanner providing essential information by generating an accurate point cloud of the processed environment through 240,000 distance measurements per second.



The Qube 240 produces images with an unmatched level of accuracy that is achieved with the help of the integrated Applanix APX15 INS. It generates precise, three-dimensional information using the shape of the earth and its surface characteristics. This information can then be used in appli-

cations, such as calculating stock volumes in mines, inspecting power lines, gathering elevation models of ground under dense vegetation, or for calculating biomass feedstocks. LiDAR technology can also be used for mapping infrastructure and for surveying large areas, even at night.

Qube 240

Technical Specifications



Wavelength	905 nm
Maximum Altitude	140 m AGL
Suggested Altitude	100 m AGL
Precision	1.8 - 2.5 cm*
Accuracy	< 3 cm**
Scanner Field of View	70°
Shots per Second	240,000
Point Density @100 m	50 -100 points/m ²
Multi-echo Technology	up to 3 echoes per shot
Payload Weight RTF	948.7 g
Flight Time	60 minutes

- Class 1 (Eye Safe)
- Applanix POSPac™ UAV, GNSS and INS software for PPK (license for one year included)
- YellowScan Cloudstation Software to generate survey grade LAS files (license must be bought separately)

* Precision, also called reproducibility or repeatability, accounts for the variation in successive measurements taken on the same target. Depends on altitude AGL
 **Accuracy is the degree of conformity of a measured position to its actual (true) value.

Sample Data



FLIGHT ALTITUDE
80 m | 262 ft AGL



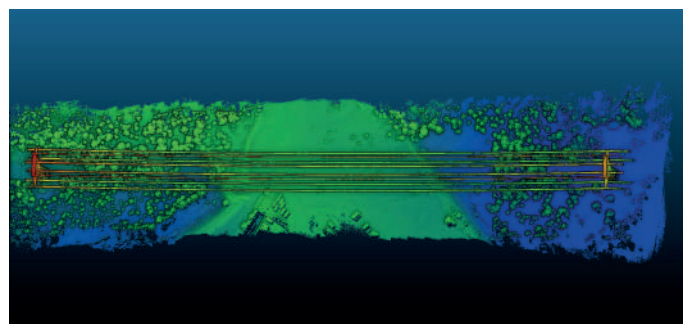
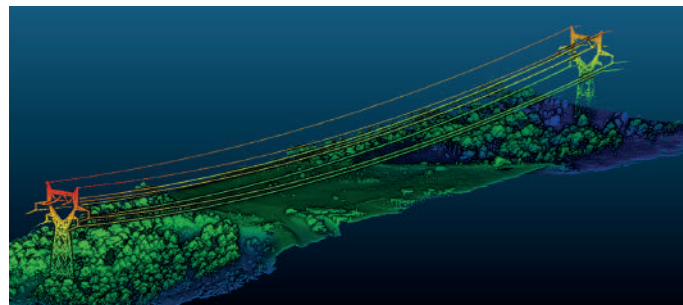
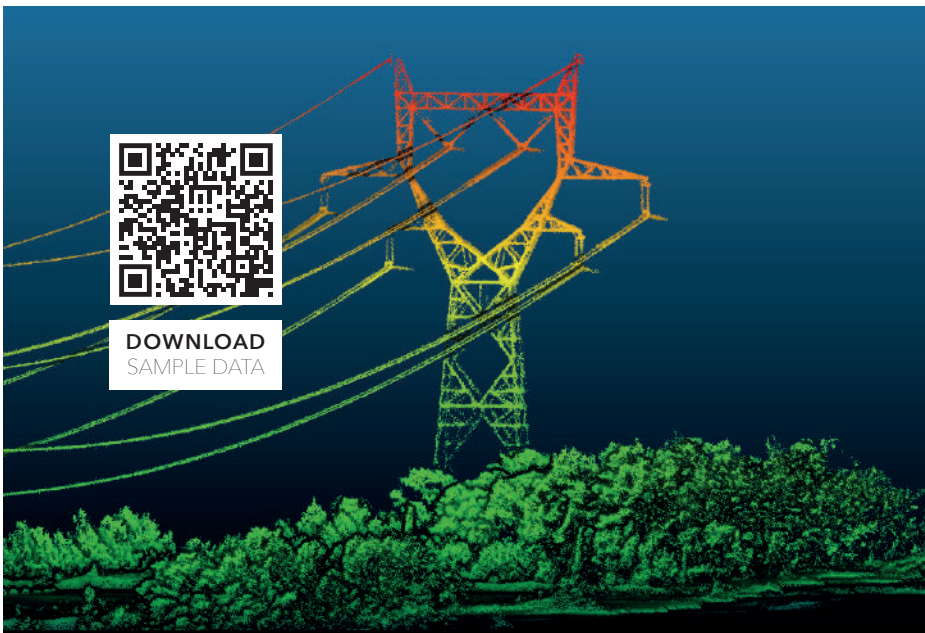
FLIGHT SPEED
18 m/s



GSD
118 pts/sqm



DOWNLOAD
SAMPLE DATA





MicaSense RedEdge-P

RGB and Multispectral Data

The RedEdge-P is the ultimate solution for collecting high-resolution RGB and multispectral data for agriculture, forestry, environmental monitoring and more.



The RedEdge-P is the premium multispectral camera for monitoring general plant health as well as plant counting, early weed detection and other tasks requiring machine learning.

RedEdge-P Technical Specifications

Sensor Resolution	1456 x 1088 (1.6MP per MS band), 2464 x 2056 (5.1MP panchromatic band)
Wavelength	Blue (475 nm center, 32 nm bandwidth), Green (560 nm center, 27 nm bandwidth), Red (668 nm center, 14 nm bandwidth), RedEdge (717 nm center, 12 nm bandwidth), near-IR (842 nm center, 57 nm bandwidth)
RGB Color Output GSD	5.1 MP (global shutter, aligned with all bands)* 7.7 cm per pixel (per MS band) at 120m (393 ft) AGL 3.98 cm per pixel (panchromatic band) at 120m (393 ft) AGL
Trigger Interval	0.8 seconds
Interfaces	3 configurable GPIO / select from trigger input, PPS input, PPS output, and top of frame signals. Host virtual button. USB 2.0 port for WiFi. Serial. 10/100/1000 Ethernet.
Field of View	50° HFOV x 38° VFOV (MS), 44° HFOV x 38° VFOV (PAN)
Storage	CFexpress Card
Payload Weight RTF	503.7 g
Dimensions	8.9 x 7.0 x 6.7 cm (3.5in x 2.8in x 2.6in)
External Power	7.0 V - 25.2 V
Power Input	5.5/7.0/10W (standby, average, peak)

*with appropriate post-processing

Sample Data



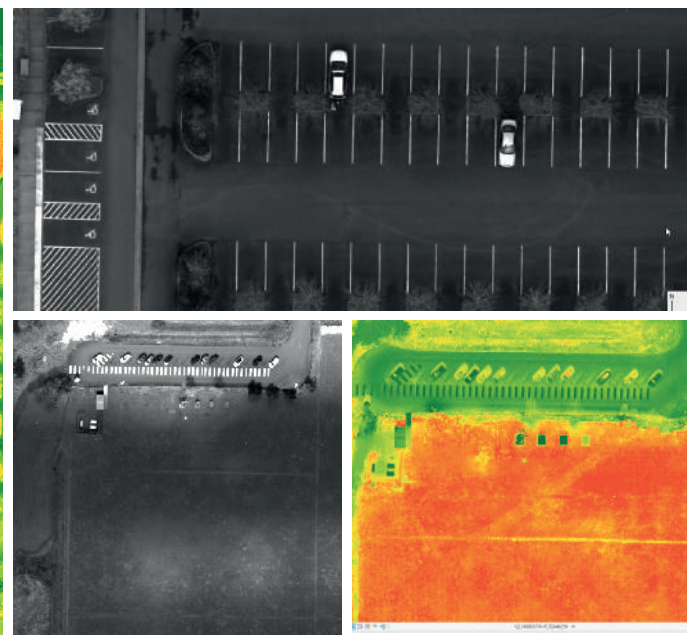
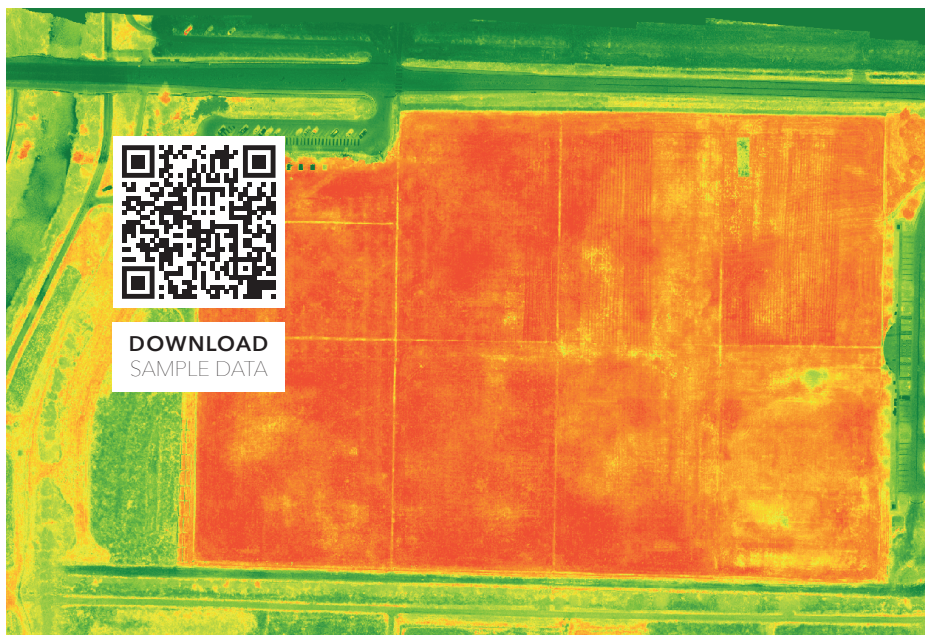
FLIGHT ALTITUDE
120 m | 393 ft AGL



FLIGHT SPEED
17 m/s



GSD
4.01 cm/px





TRINITY PRO

MicaSense Altum-PT

MicaSense Altum-PT

RGB, Multispectral and Thermal Camera

The Altum-PT is the best-in-class multispectral camera with synchronized thermal images ideal for production agriculture, phenotyping, and environmental monitoring.



The MicaSense Altum-PT captures synchronized multispectral, thermal, and panchromatic data for pixel-aligned outputs at high resolutions for advanced vegetation research

applications. This includes plant health monitoring from early emergence on, with thermal data for water stress and irrigation system monitoring.

Altum-PT

Technical Specifications

Sensor Resolution	2064 x 1544 (3.2MP per MS band), 4112 x 3008 (12MP per PAN band) 320 x 256 thermal infrared
Spectral Bands	Blue (475 nm center, 32 nm bandwidth), Green (560 nm center, 27 nm bandwidth), Red (668 nm center, 14 nm bandwidth), Red Edge (717 nm center, 12 nm bandwidth), NIR 842 nm center, 57 nm bandwidth)
RGB Color Output	12.4 MP (global shutter, aligned with all bands)
Thermal	FLIR LWIR thermal infrared 7.5-13.5um radiometrically calibrated
Multispectral GSD	5.28 cm per pixel at 120 m (per multispectral band)
Thermal GSD	33.5 cm per pixel at 120 m
Panchromatic GSD	2.49 cm per pixel at 120 m
Trigger Interval	1.0 seconds
Interfaces	3 configurable GPI /select from trigger input, PPS input, PPS output, and top of frame signals. Host virtual button. USB 2.0 port for WiFi. Serial. 10/100/1000 Ethernet.
Field of View	50° HFOV x 38° VFOV (multispectral) 46° HFOV x 35° VFOV (panchromatic) 48° x 39° (thermal)
Storage	CFexpress Card
Payload Weight RTF	733.7 g
Flight Time	60 min
Dimensions	11.0 x 8.0 x 6.9 cm (4.3 in x 3.1 in x 2.7 in)
External Power	7.0 V - 25.2 V
Power Input	5.5/7.0/10W (standby, average, peak)

Sample Data



FLIGHT ALTITUDE
60 m | 197 ft AGL



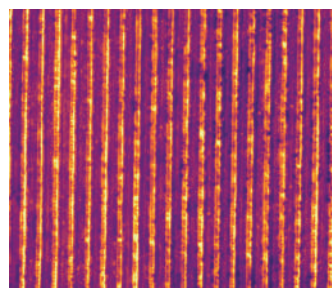
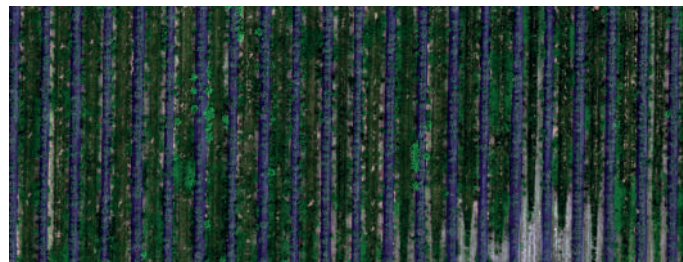
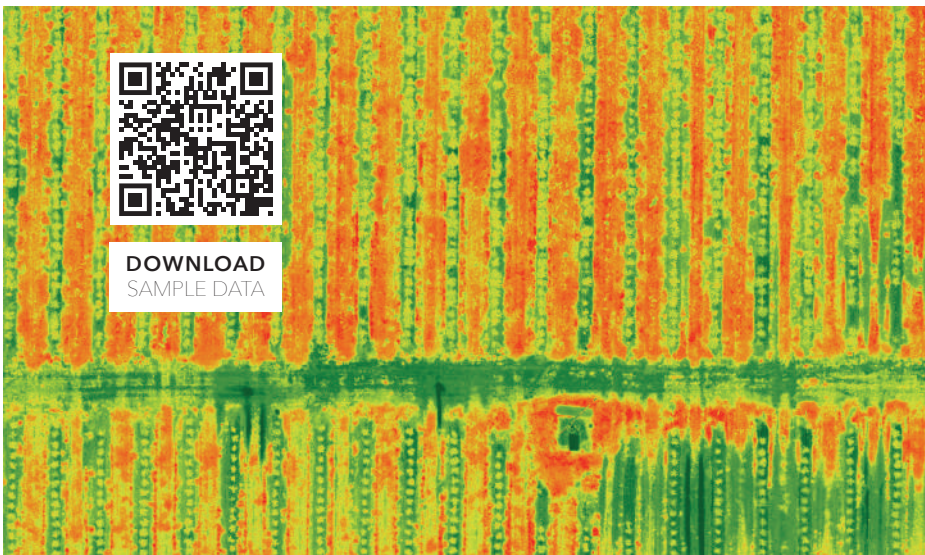
FLIGHT SPEED
17 m/s



GSD
1.27 cm/px



DOWNLOAD
SAMPLE DATA



™ Trinity is a registered trademark of Quantum-Systems GmbH.
Copyright © 2023 Quantum-Systems GmbH. All rights reserved.
Quantum-Systems reserves the right to make changes without notice in design, specifications and models.

Address

Quantum-Systems GmbH | Zeppelinstr. 18 | 82205 Gilching | Germany
quantum-systems.com

Document number

QS_TPro_Overview_Cameras_V002_230613

Release date

June 13th, 2023

**QUANTUM
SYSTEMS**

Quantum-Systems GmbH
Zeppelinstr. 18 | 82205 Gilching | Germany
quantum-systems.com

