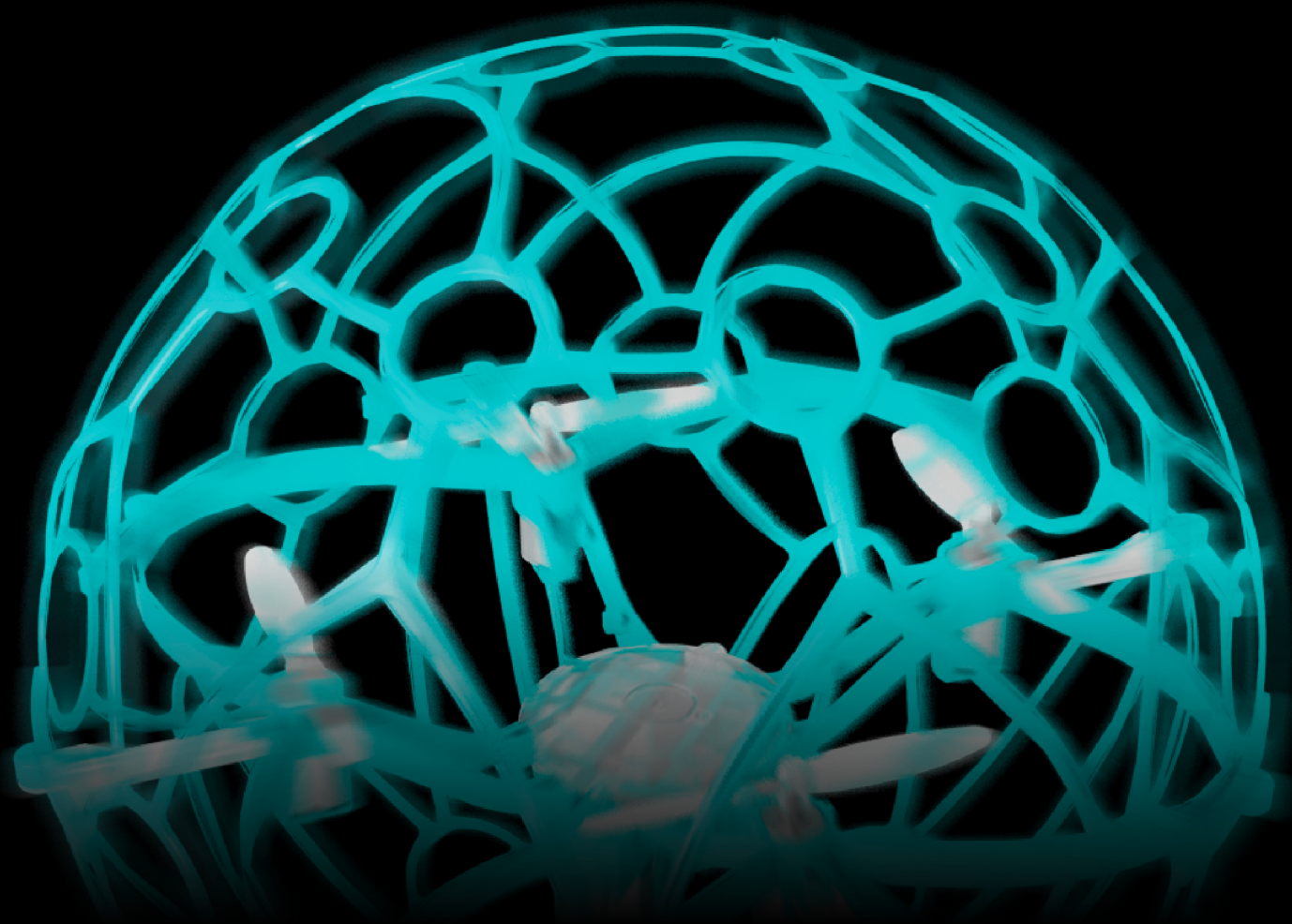


DRONEPANG

F1 PRO

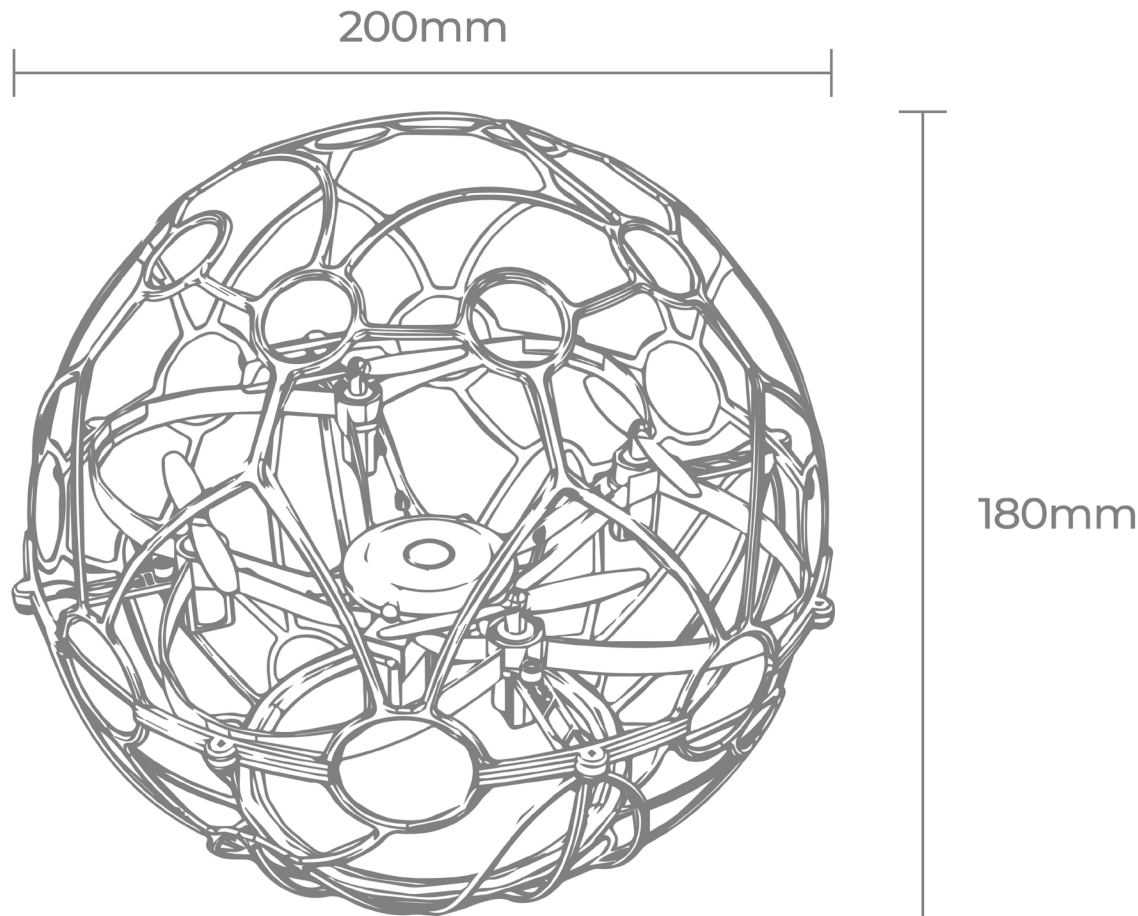


 HELSEL

 DRONE
PANG

DRONEPANG F1 PRO

Components include upper and lower shells, mainframe, remote controller, battery, propeller, charging cable, propeller remover, remote controller stick, connecting arm, screws and driver.



Softness, triumph over strength - elastic flexible guard shell that does not break even in intense flight

Faster, faster! - 3 levels of speed control for a variety of fun

One-touch take-off and landing - automatic take-off and landing at the push of a button

Can you fly at the same time? YES - Up to 30s without interference!



F1 PRO, what's better than its predecessor?

Collision resistant and significantly improved flight

Compared to its predecessor, which was relatively vulnerable to collisions, its flight capability has been noticeably improved. It does not fall easily even in frequent collisions, and it is not easy to break.

Compact remote controller

Compared to its predecessor, the size and design fits in one hand makes it easier to maneuver. In addition, the tension sensitivity of the stick is improved, providing a more satisfying flight experience.

Altitude maintenance function ON/OFF

Unlike the previous product, the altitude hold function can be turned on / off. If the barometer fails or an error occurs due to a collision, the altitude hold function can be turned off to fly manually.

SPEC

Weight	74g (drone) / 24g (battery)
size	200x200x180mm
Flight time	Approx. 6 minutes (hovering)
Flight distance	Approx. 50 m (may vary depending on surrounding environment)
Maximum speed	5m/s
Battery	7.4V 450mAh 2S 25C Lithium Polymer Battery
charging time	Approx. 50 minutes (may vary depending on battery level)
Charging method	Charging the USB cable

* The upper and lower shells of this product are products that are directly combined by the customer. (8 upper and lower screws, screwdriver included)



<https://www.helselgroup.com/>
1688-5343

